

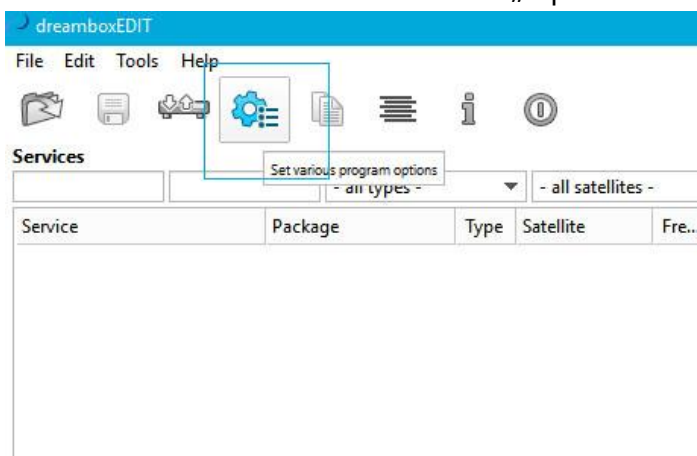
# Návod na úpravu favoritných skupín v prog. DreamEdit

## Potrebné:

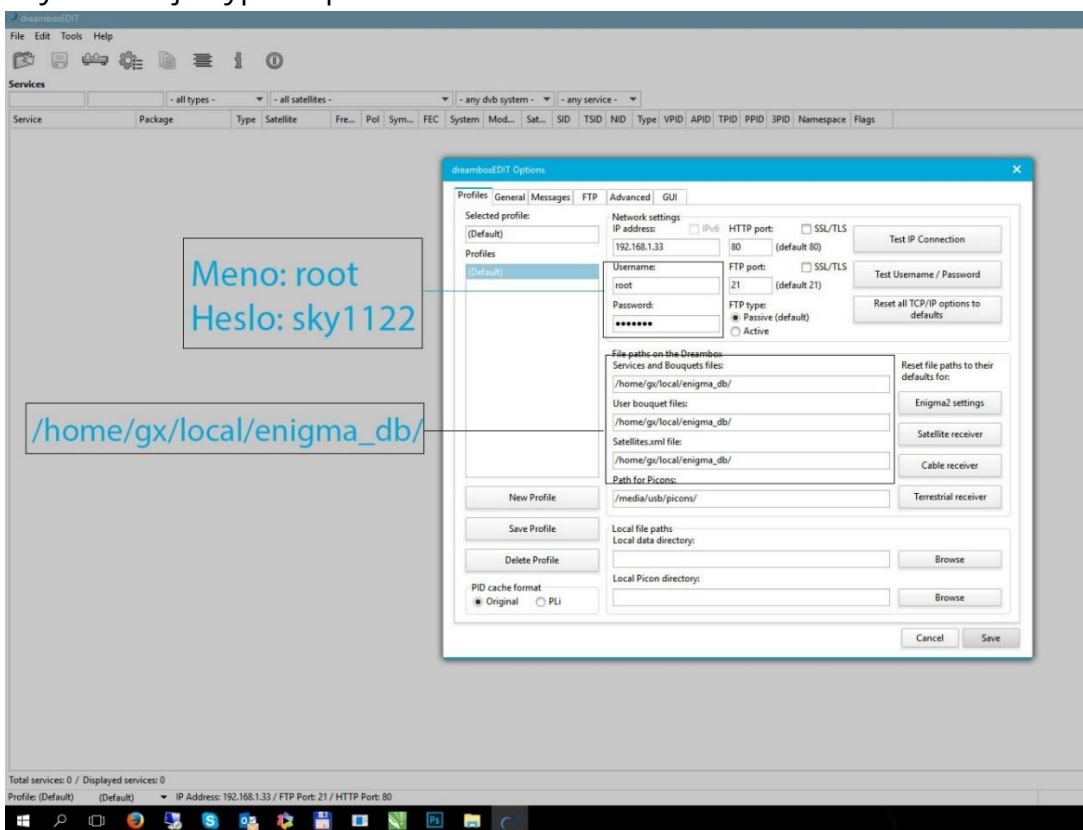
- v prijímači mať verziu SW 1.04.20 a novšiu
- v prijímači zapnúť FTP Server Menu-> Nastavenia -> Nastavenia Misc-> FTP Server - zap
- program DreamboxEdit v. 7.2.0.0 a novší

## Návod:

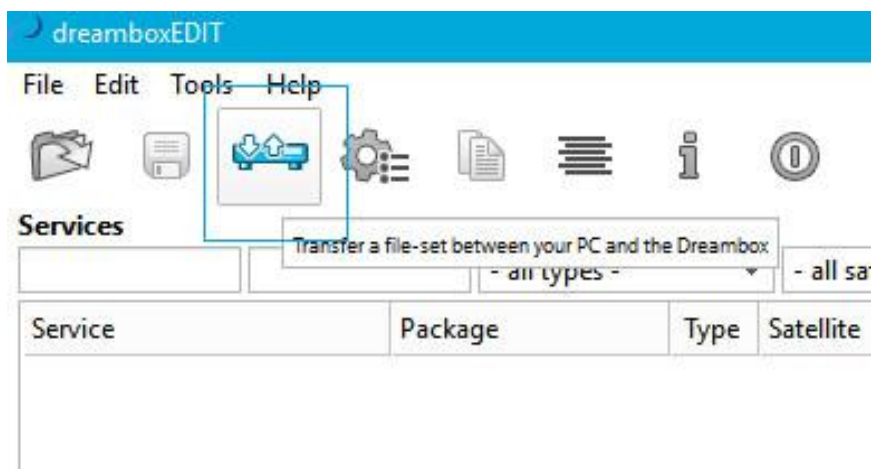
1. Otvorte v DreamboxEdit možnosť „Options“



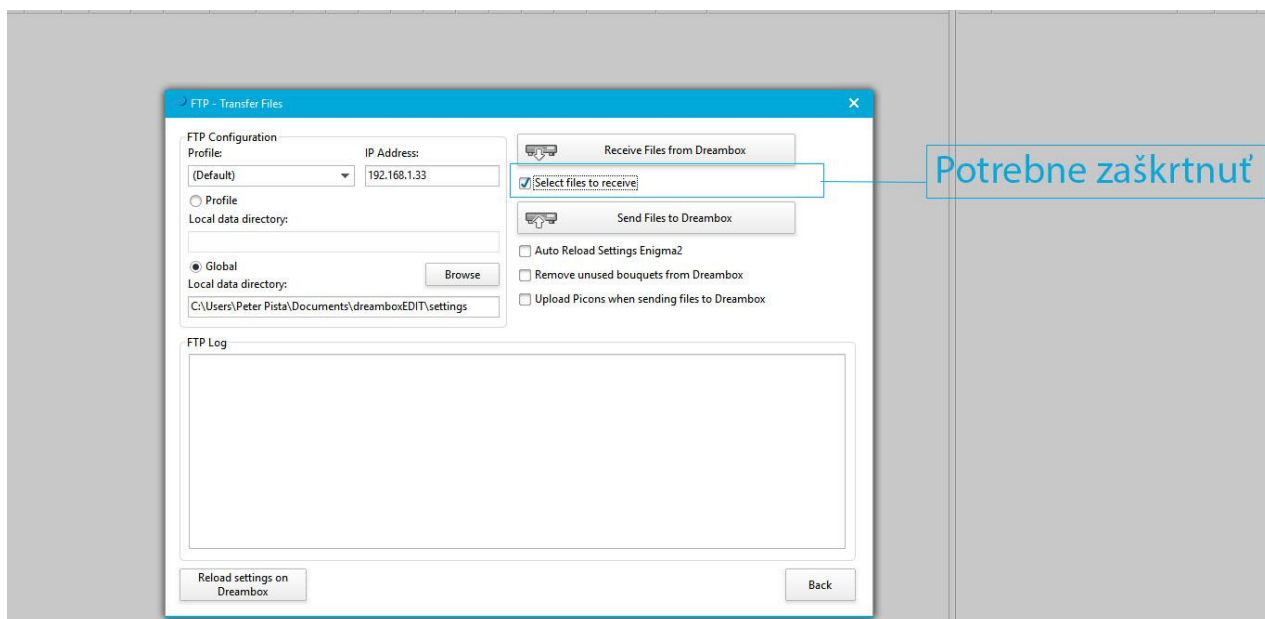
2. Do políčka IP adresa zadajte IP adresu prijímača.  
Zvyšné údaje vyplňte podľa obrázku



3. Potvrďte tlačidlom „Uložiť“ a otvorte možnosť FTP -Transfer File

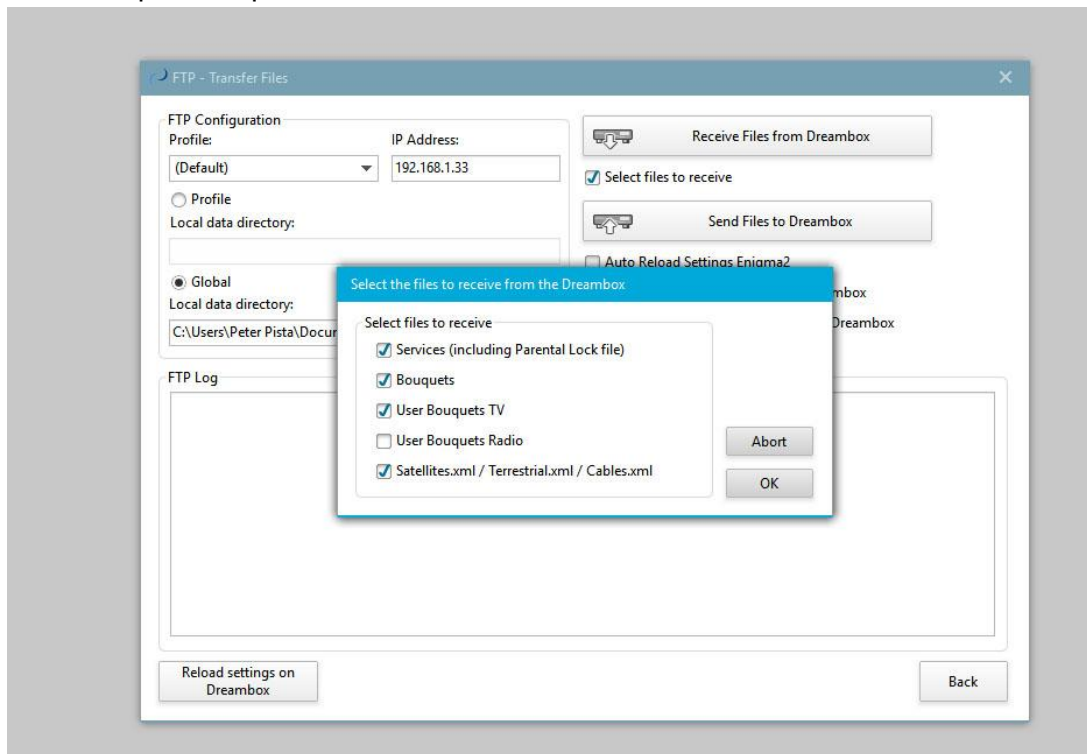


4. Zaškrtnite políčko podľa obrázku



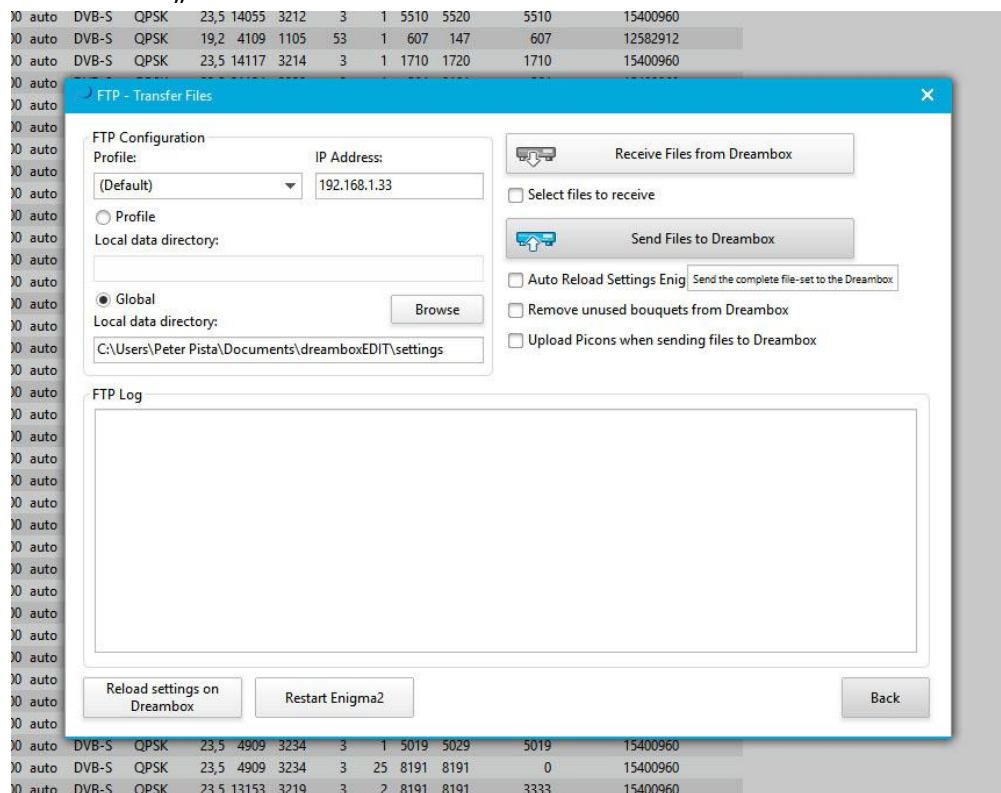
5. Zvoľte možnosť „Receive Files from Dreambox“

6. Označte políčka podľa obrázku a stlačte „OK“ :



Po úprave favoritných staníc

1. Otvorte možnosť FTP -Transfer File
2. Kliknite na „Send Files to Dreambox“



### 3. Po dokončení nahrávání klikněte na „Restart Enigma2“

The screenshot displays the 'FTP - Transfer Files' dialog box in a software interface. The background shows a list of DVB-S channels with columns for frequency, modulation, and other parameters. The dialog box is titled 'FTP - Transfer Files' and contains the following elements:

- FTP Configuration:**
  - Profile: (Default)
  - IP Address: 192.168.1.33
  - Local data directory: C:\Users\Peter Pista\Documents\dreamboxEDIT\settings
  - Buttons: Browse, Reload settings on Dreambox
- Actions:**
  - Receive Files from Dreambox (with folder icon)
  - Select files to receive (checkbox)
  - Send Files to Dreambox (with folder icon)
  - Auto Reload Settings Enigma2 (checkbox)
  - Remove unused bouquets from Dreambox (checkbox)
  - Upload Picons when sending files to Dreambox (checkbox)
- FTP Log:** A scrollable text area showing the following log entries:

```
** Sending file "/home/ga/local/enigma_db/bouquets.radio" **
FTP-Transfer wird gestartet
Transfer abgeschlossen
** Sending file "/home/ga/local/enigma_db/userbouquet.dbe00.radio" **
FTP-Transfer wird gestartet
Transfer abgeschlossen
** Sending file "/home/ga/local/enigma_db/satellites.xml" **
FTP-Transfer wird gestartet
Transfer abgeschlossen
** Sending file "/home/ga/local/enigma_db/terrestrial.xml" **
FTP-Transfer wird gestartet
Transfer abgeschlossen
** Sending file "/home/ga/local/enigma_db/cables.xml" **
FTP-Transfer wird gestartet
Transfer abgeschlossen
Verbindung wird getrennt.
Verbindung getrennt.
```
- Buttons:** Reload settings on Dreambox, Restart Enigma2 (highlighted with a red box), Back

### 4. Pomocou DO reštartujte prijímač